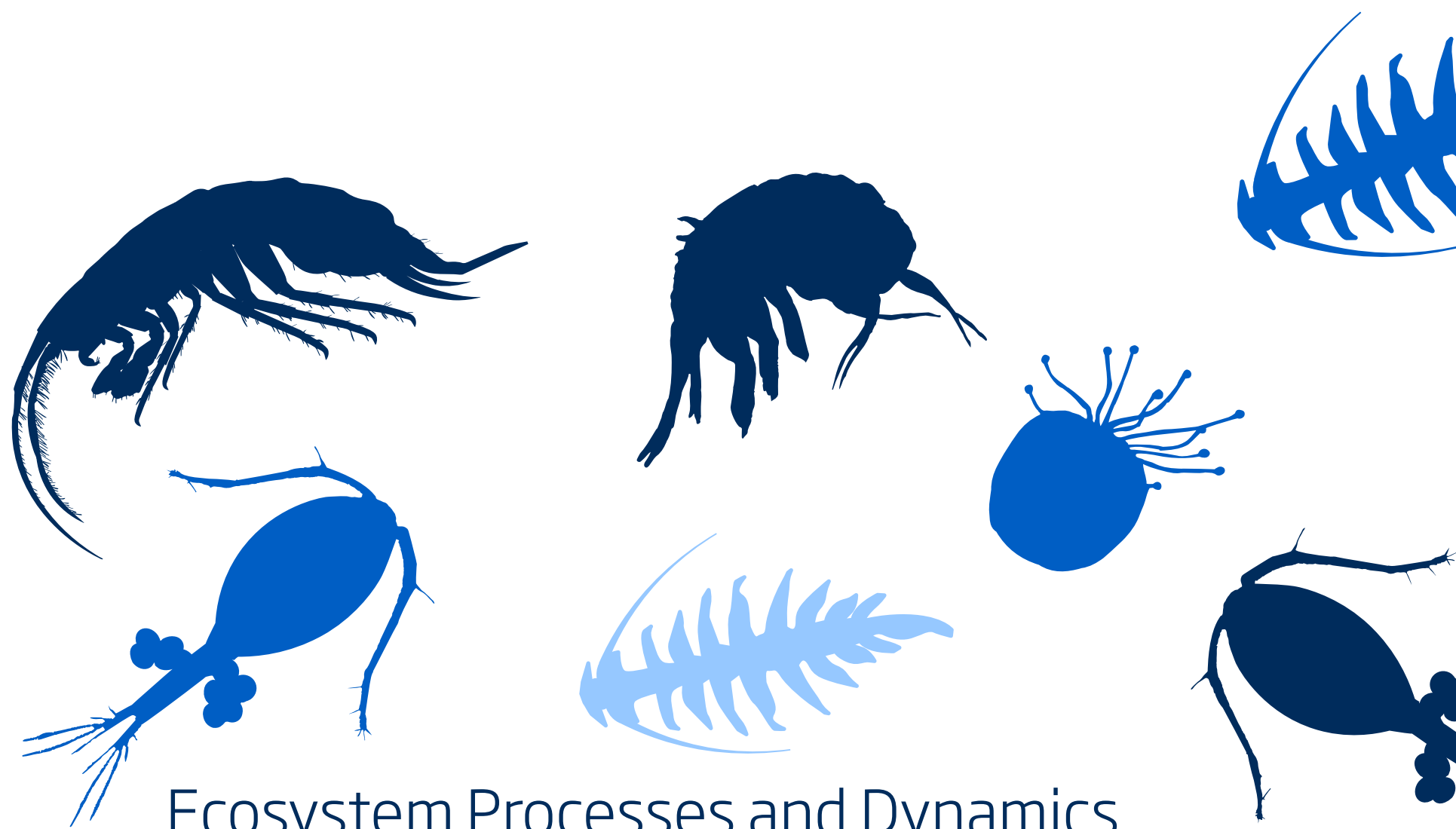


WGSCALLOP

Scallop Assessment Working Group



Ecosystem Processes and Dynamics
Steering Group (EPDSG)

RESEARCH FOCUS

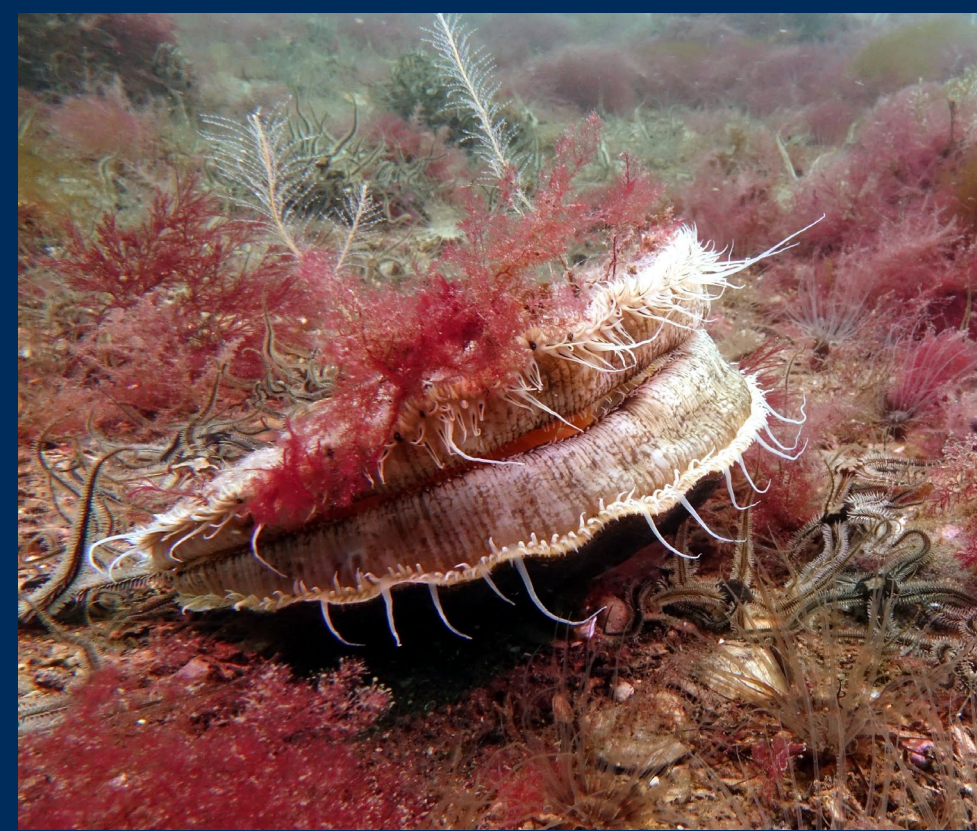
- Compilation and analysis of data for scallop stocks
- Development of stock assessment methodologies for scallop species
- Delineation and refinement of scallop stock structure and boundaries
- Working with scallop ageing workshops (WKSA) on common ageing protocols for scallops
- Best practice for scallop survey methodologies

OUR OBJECTIVE

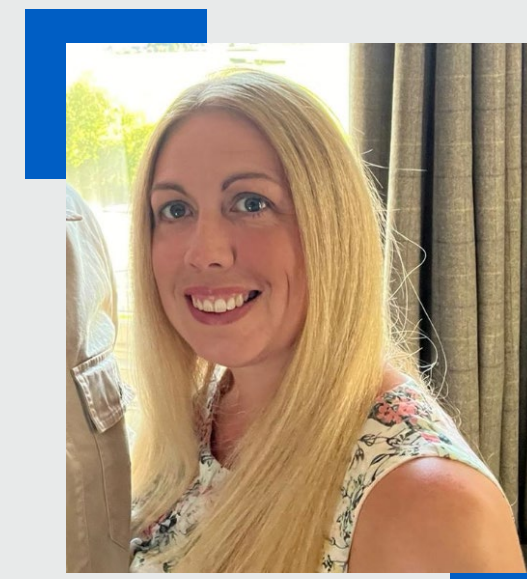
Discuss the key issues surrounding scallop species and work towards the improvement and further development of appropriate stock assessment methods. In the longer term, we hope to provide advice to fisheries managers and policy makers on scallop stocks and harvesting of these important fisheries resources.

OUR EXPERTISE

- Stock assessment
- Survey methods
- Gear efficiency
- Shellfish ageing
- VMS and logbook data analysis
- Scallop ecology and biology
- Scallop physiology and behaviour
- Spatial modelling
- Stock structure
- Genetics and larval dispersal



OUR CHAIRS



Lynda Blackadder



Isobel Bloor



Scan the QR code to learn more about our work or contact the chairs. We are welcoming, inclusive, and would love to hear from you!